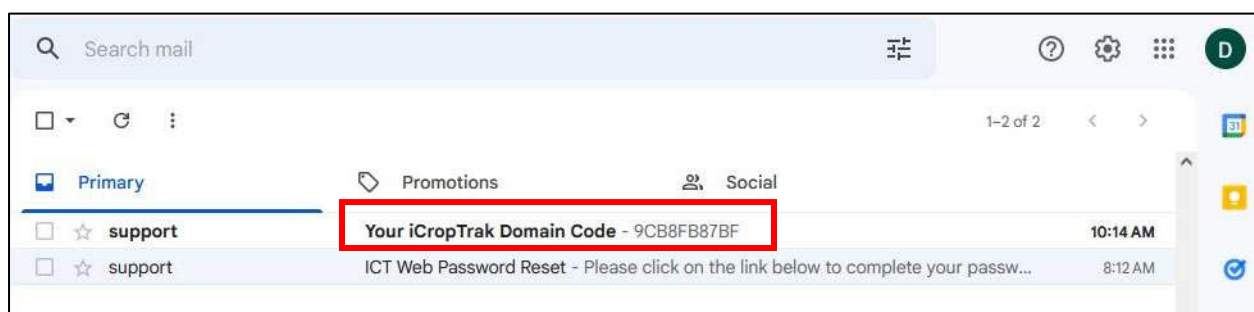




CropTrak Guide – Setting up a mobile device with your account.

CropTrak uses a device key that connects each mobile device to your account. In order to use a mobile device, you must first download the app and install it. After you have installed CropTrak, the first time you login you will have to provide the device key. If you want to use CropTrak on more than one device, you will need additional device keys for each device. Device keys can be requested by sending your name, email address and YENID to Dennis Pennington at pennin34@msu.edu.

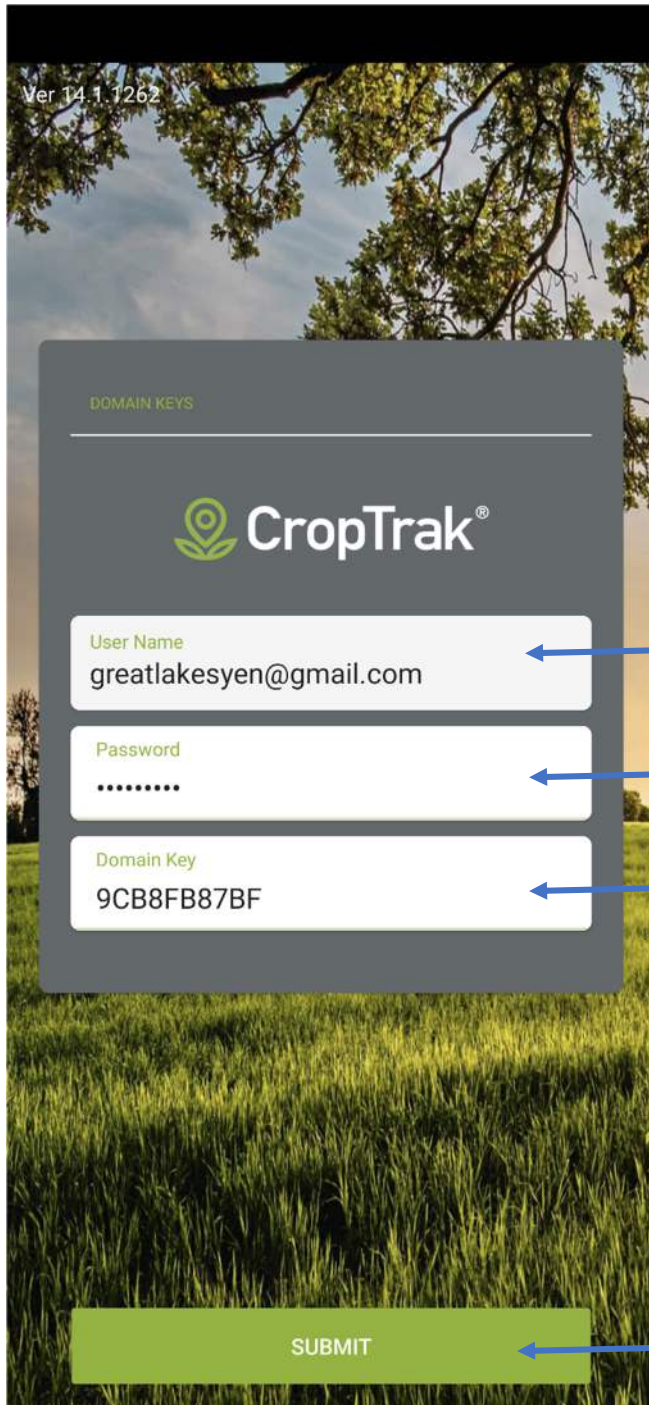
Once you have requested your device key, you will receive it in your email (see example below).



Open the email to find device key. This will need to be typed into the app.



Open the app on your device. You will need to type in your email address, password and the device key.



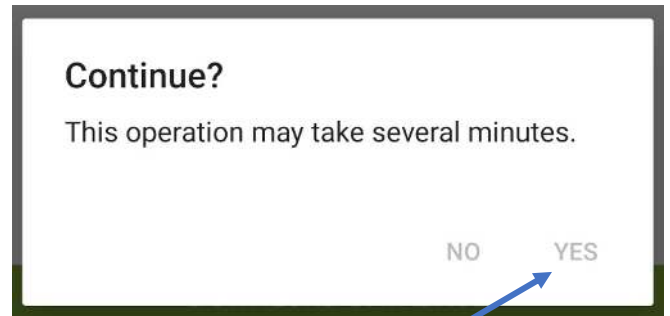
1. Enter you email address

2. Enter your password

3. Type in the domain key here.

4. Tap the submit button

In the next window, you will have to download the database. Make sure you select “Server” at the top and tap to download the database.

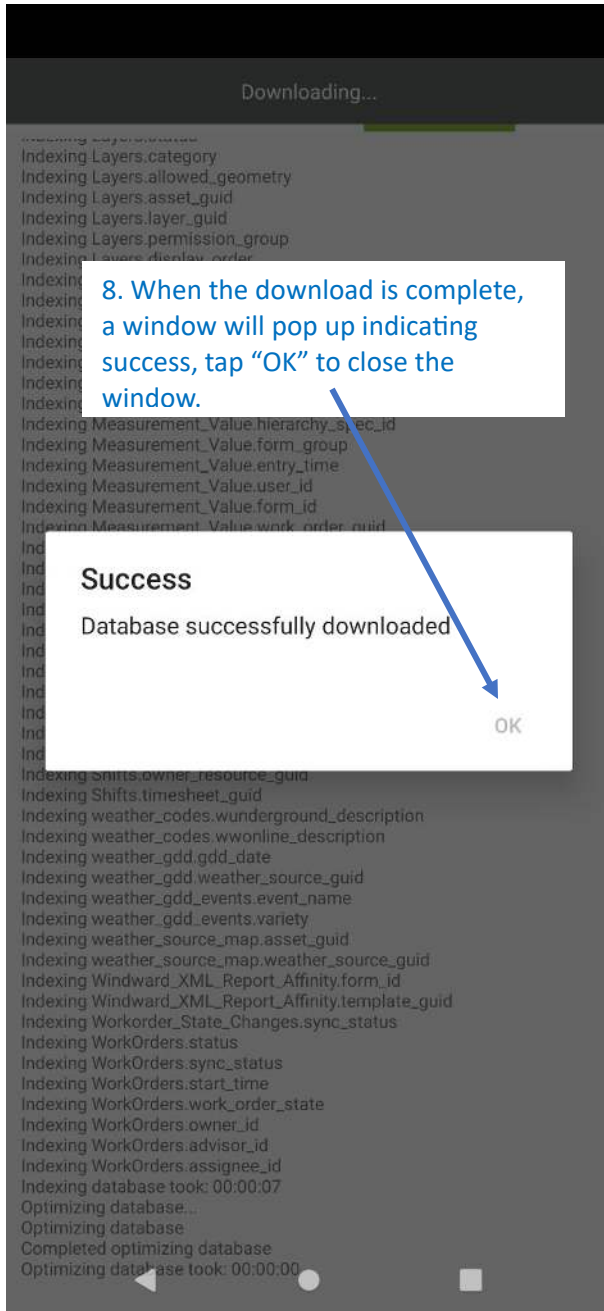


7. A window will pop up indicating this will take a while, do you want to continue? Tap yes.

Downloading may take 5-10 minutes or longer depending on how fast your internet connection is. You will see messages fill the screen as it downloads the database files. Please be patient and let it finish downloading before using other apps on the device. Also, try to not let the device go to sleep as that could stop the download depending on your device settings.



Once the database is done downloading, a message will appear indicating the download was successful. Tap "OK", then the arrow left in the top right corner of the screen.

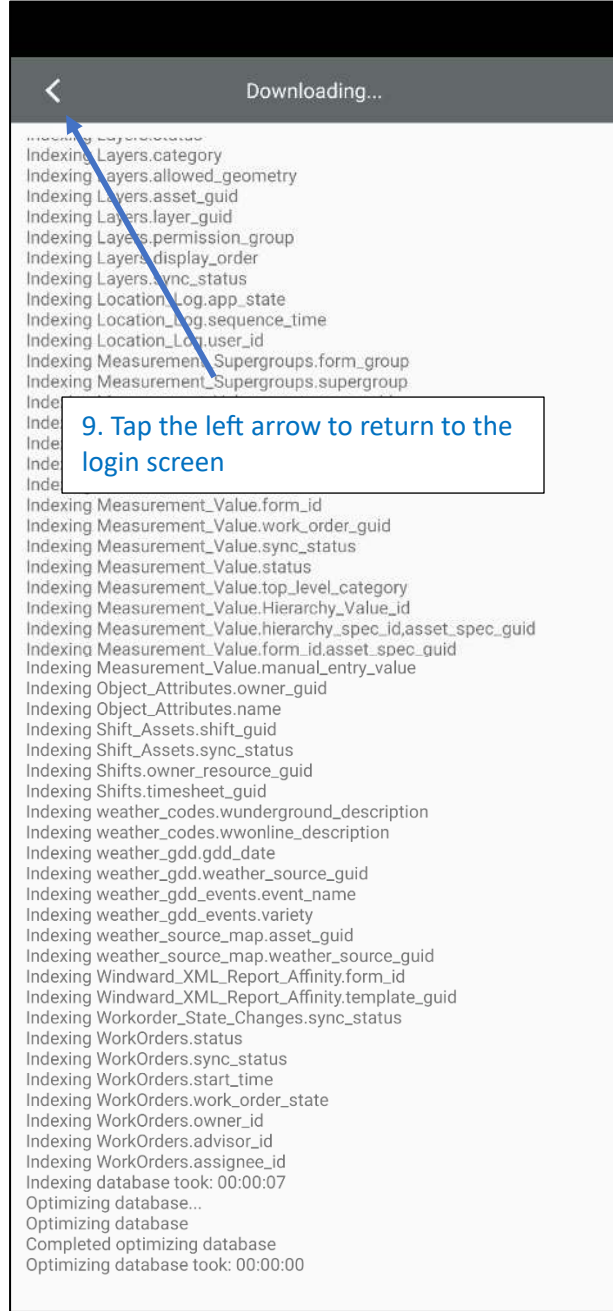


8. When the download is complete, a window will pop up indicating success, tap "OK" to close the window.

Success

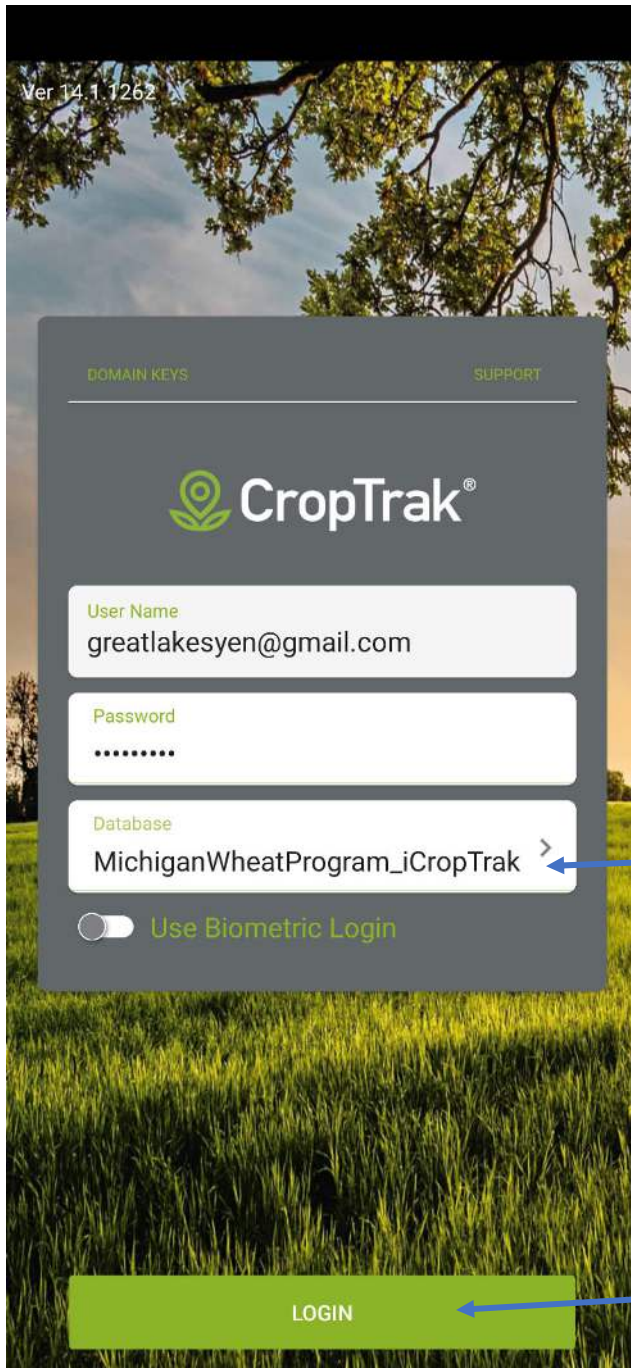
Database successfully downloaded

OK



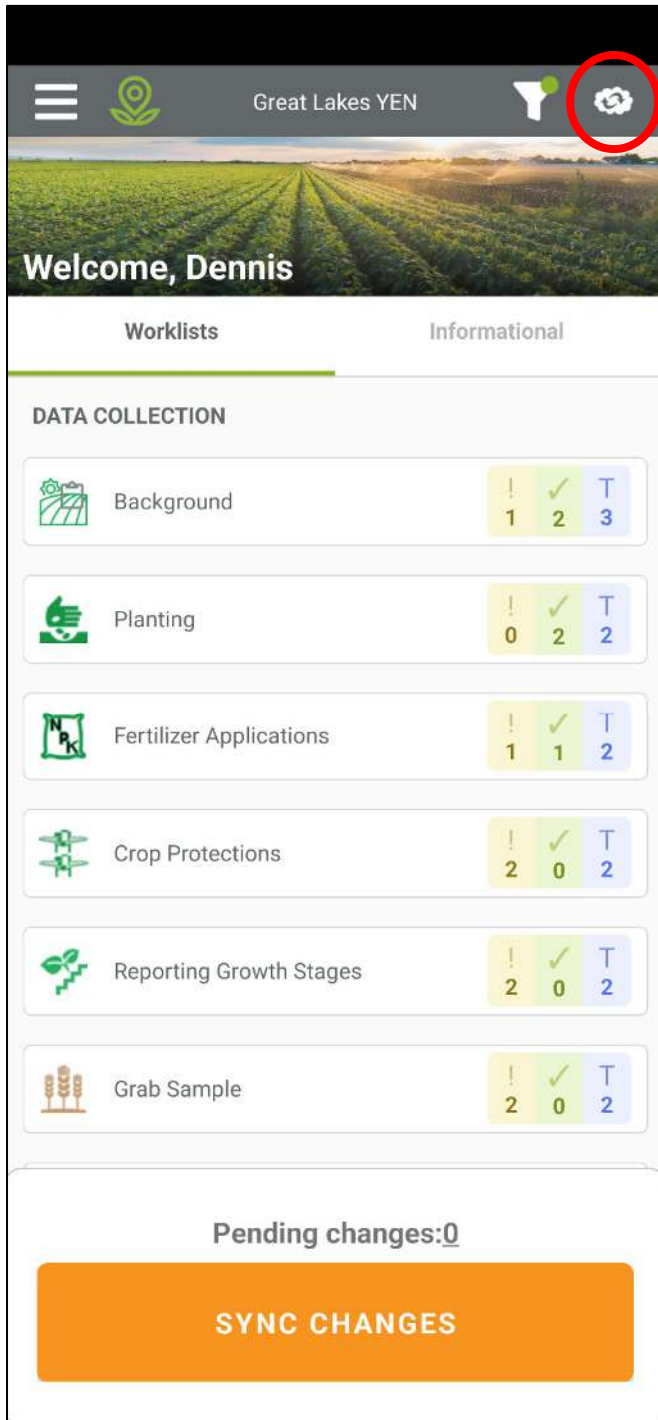
9. Tap the left arrow to return to the login screen

You have now successfully set up your mobile device to connect to your CropTrak account. Data entry can begin at any time. You will NOT have to repeat steps 1-9 again on this device. Simply open the app, make sure your email, password and database is listed and login.



10. The proper database is now listed on the login screen.

11. Tap "LOGIN". From now on, you will just need to tap here. You will NOT need to repeat steps 1-9 every time. Your device is ready to use.



12. Make sure you tap the “sync” button **BEFORE** you enter data and **AFTER** you enter data. This is how you keep your information up to date on your device and on the web.